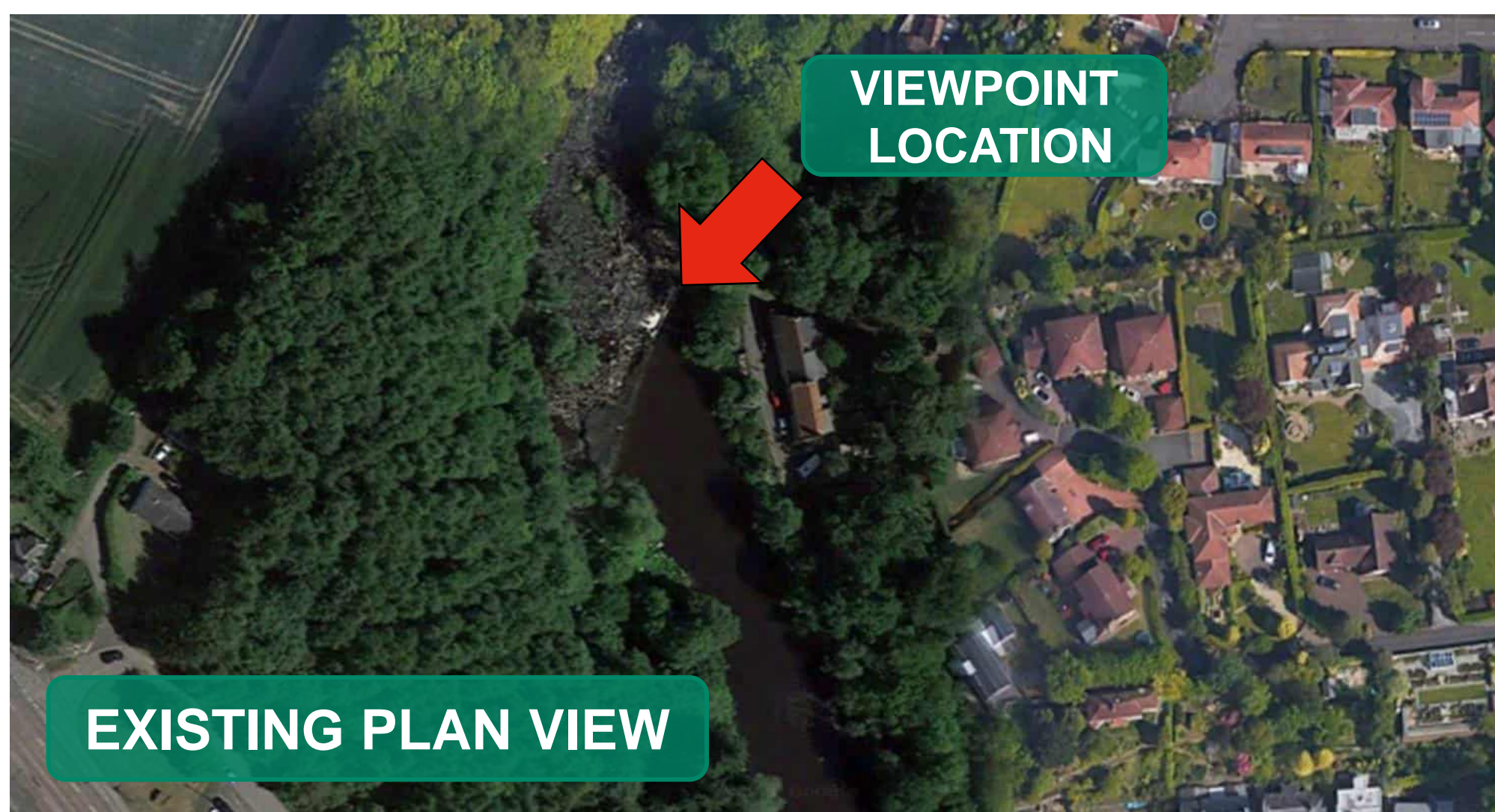


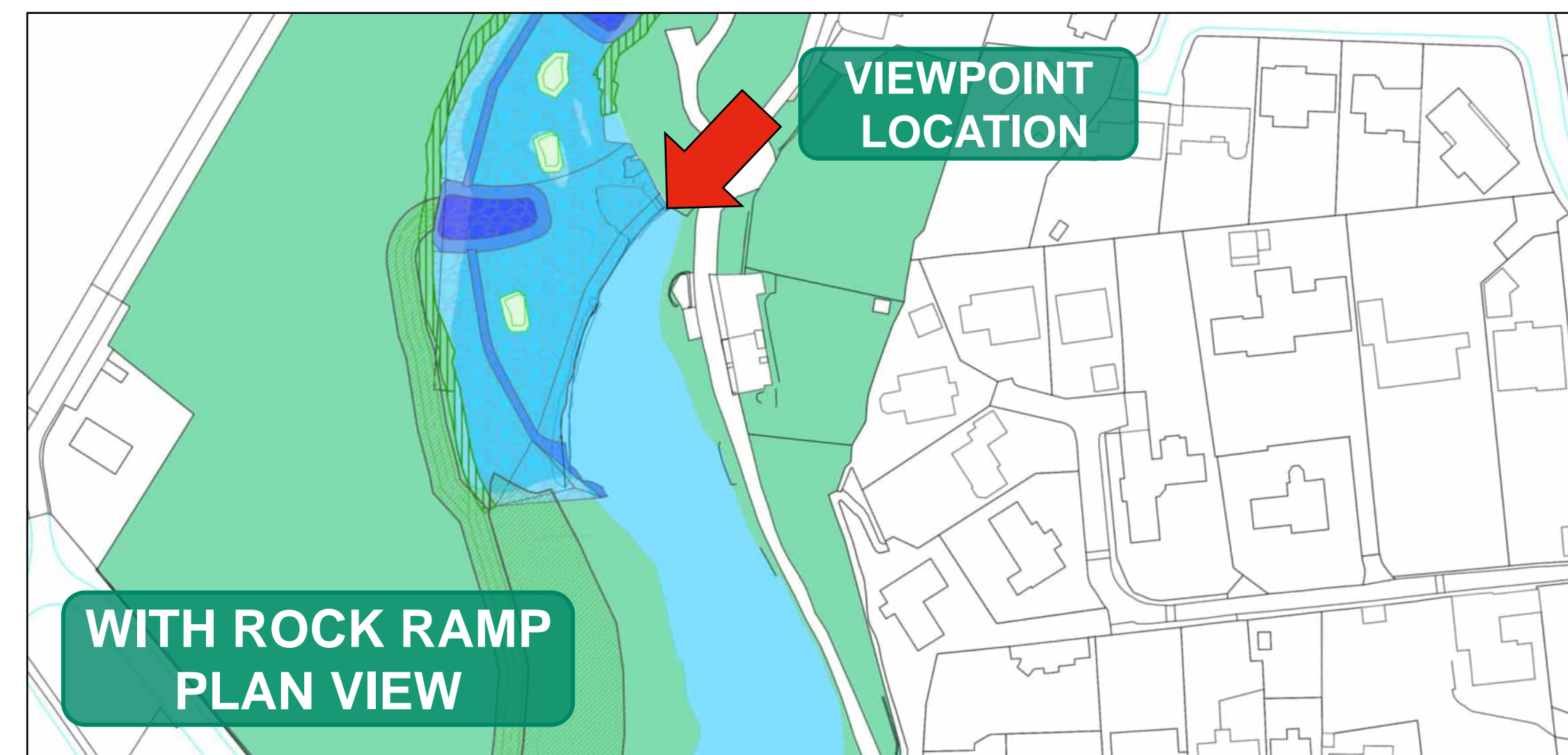
EXISTING



WITH ROCK RAMP



EXISTING PLAN VIEW



WITH ROCK RAMP PLAN VIEW

NOTE
The visualisation is an indicative image of what the rock ramp is expected to look like approximately a year after construction for a typical flow. It is based on the design as it stands which will be subject to further design development.

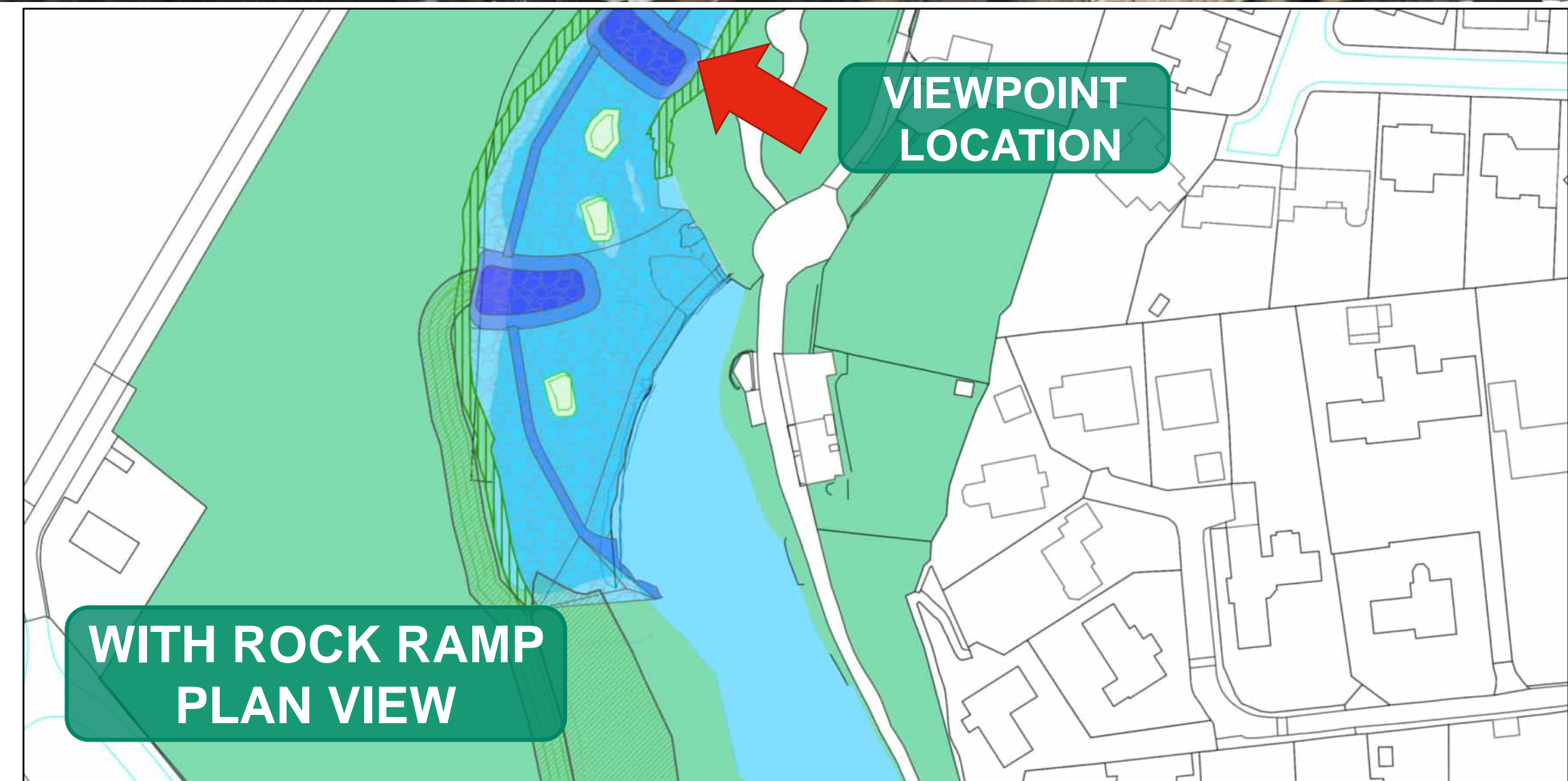
EXISTING



WITH ROCK RAMP



EXISTING PLAN VIEW



WITH ROCK RAMP PLAN VIEW

NOTE
The visualisation is an indicative image of what the rock ramp is expected to look like approximately a year after construction for a typical flow. It is based on the design as it stands which will be subject to further design development.

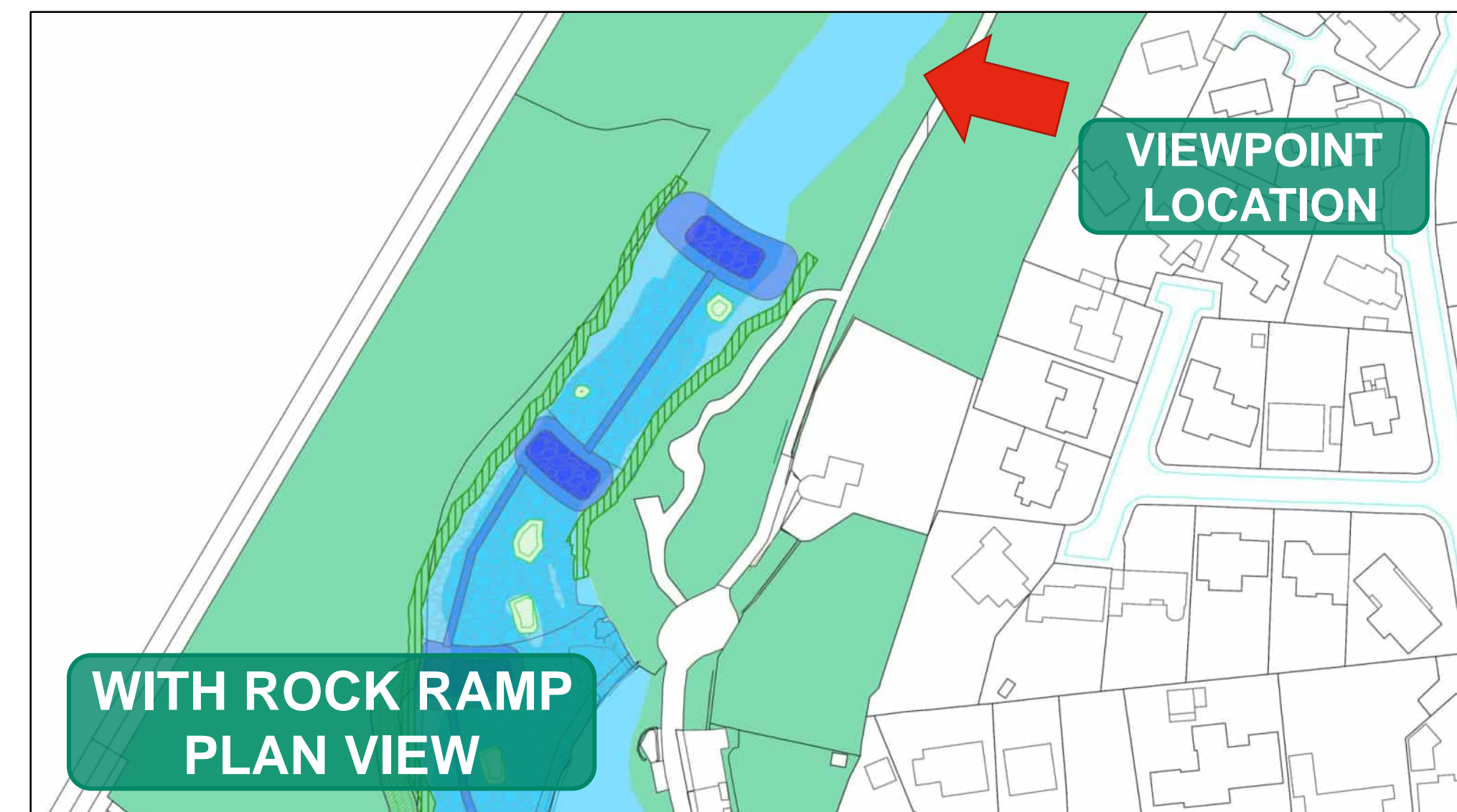
EXISTING



WITH ROCK RAMP



EXISTING PLAN VIEW



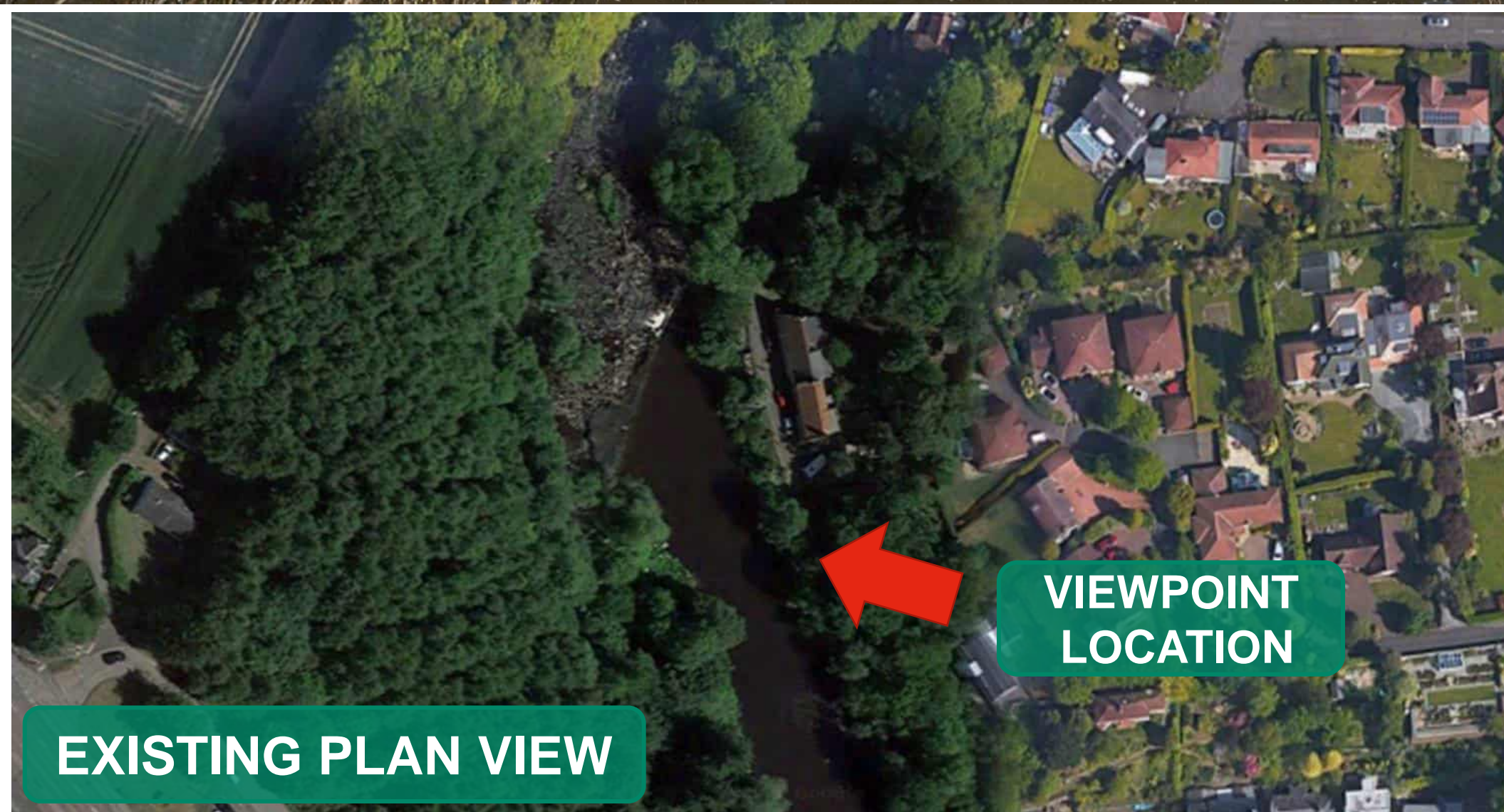
WITH ROCK RAMP PLAN VIEW

NOTE
The visualisation is an indicative image of what the rock ramp is expected to look like approximately a year after construction for a typical flow. It is based on the design as it stands which will be subject to further design development.

EXISTING

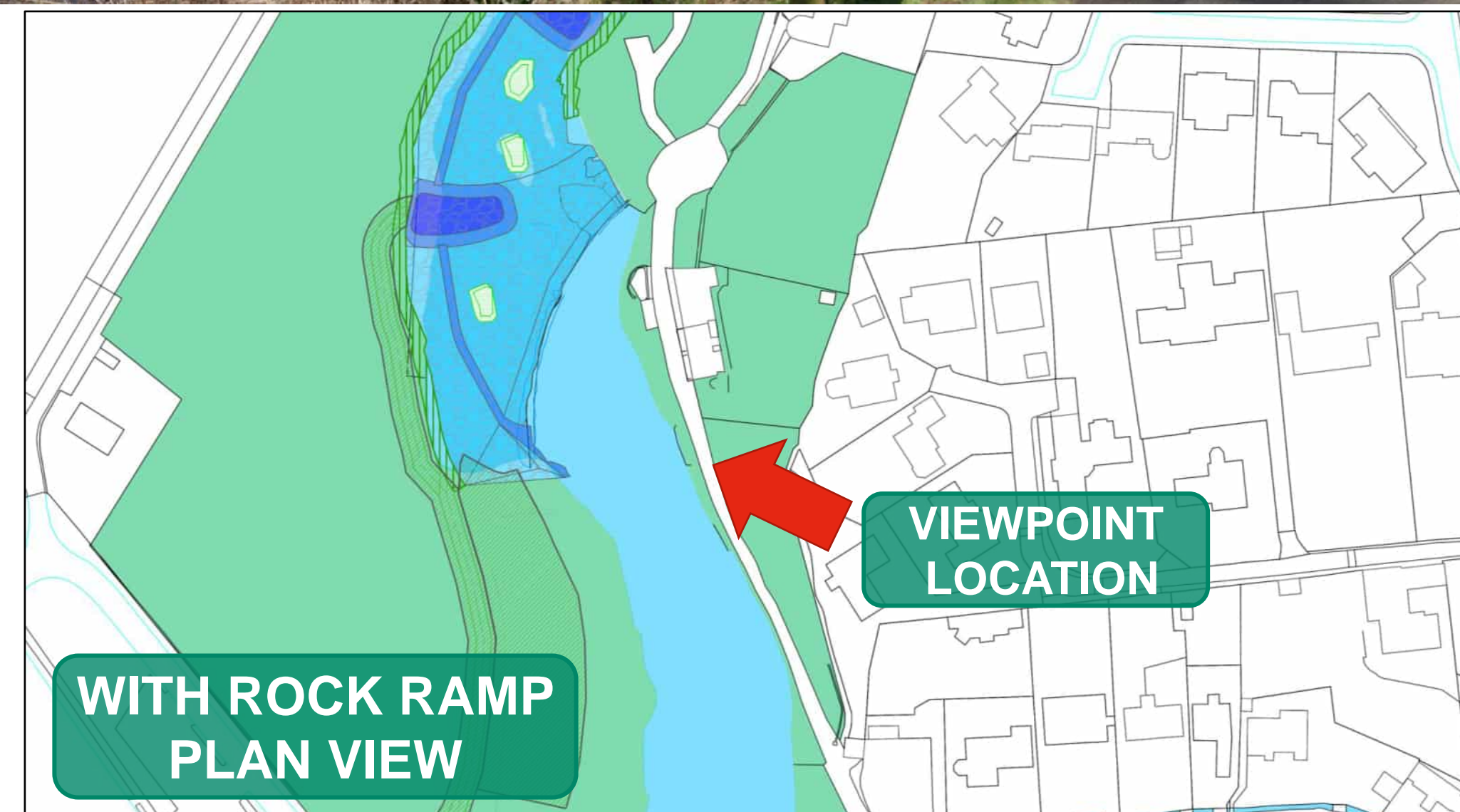


WITH ROCK RAMP



EXISTING PLAN VIEW

VIEWPOINT LOCATION



WITH ROCK RAMP PLAN VIEW

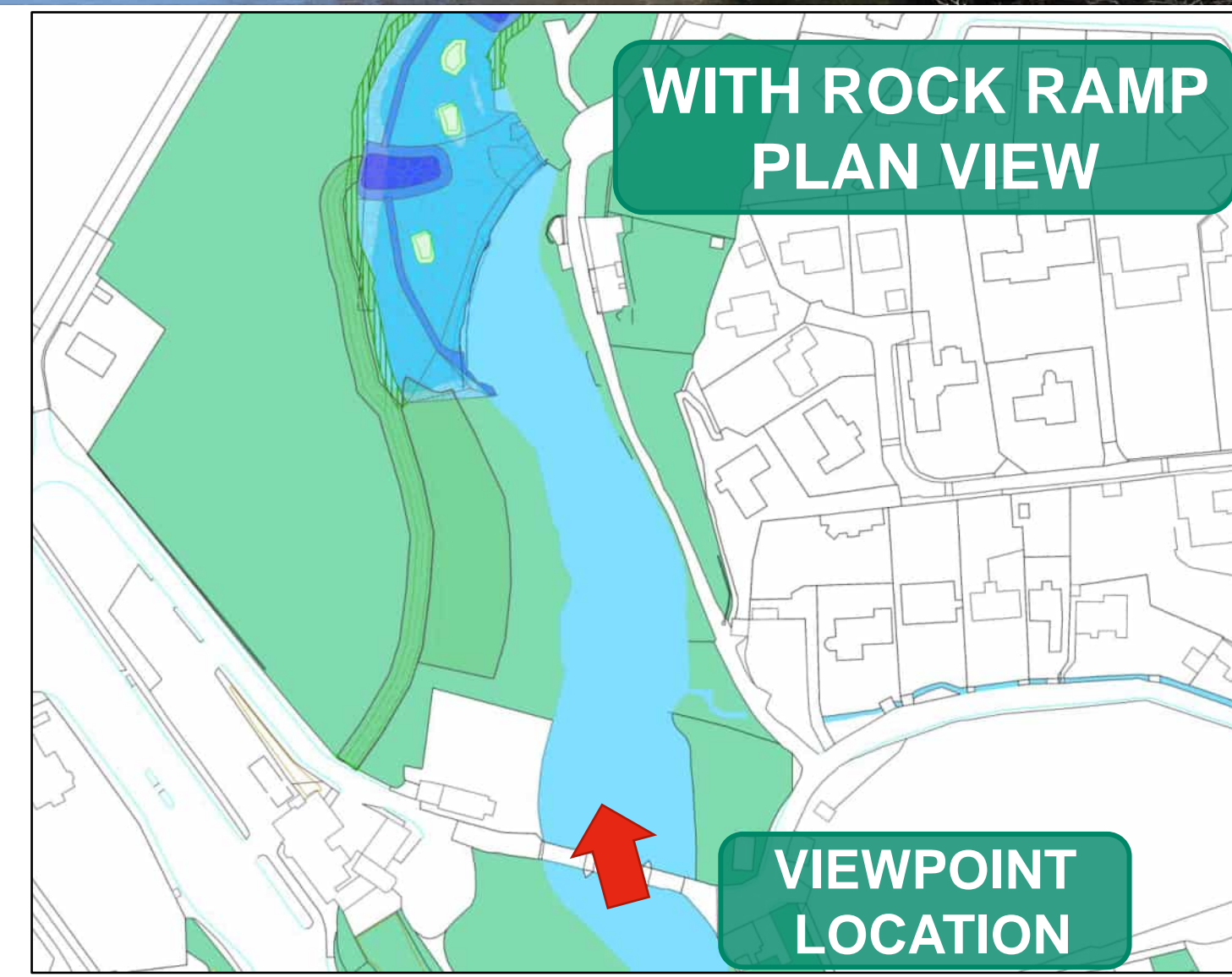
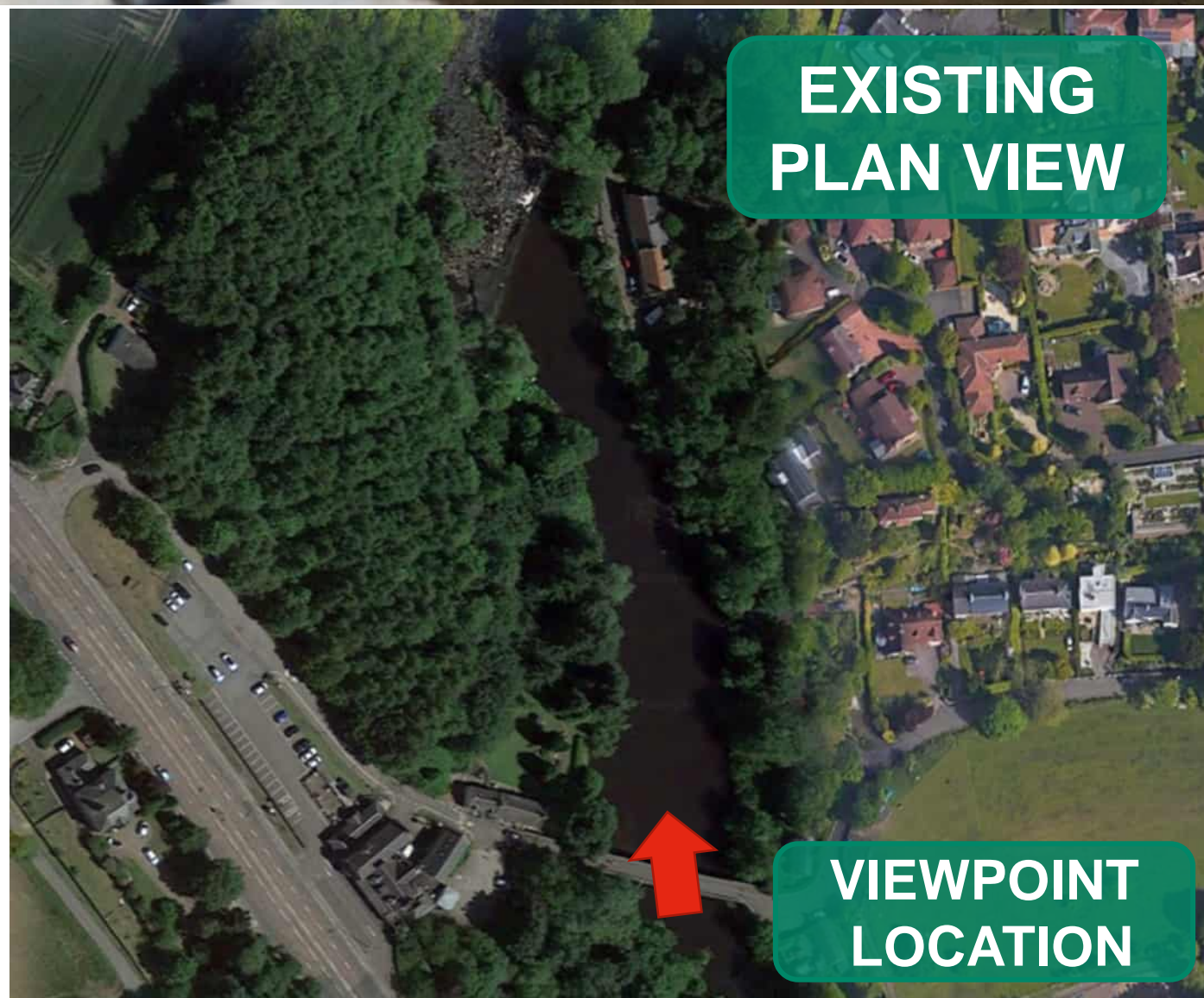
VIEWPOINT LOCATION

NOTE
The visualisation is an indicative image of what the rock ramp is expected to look like approximately a year after construction for a typical flow. It is based on the design as it stands which will be subject to further design development.

EXISTING



WITH ROCK RAMP



NOTE
 The visualisation is an indicative image of what the rock ramp is expected to look like approximately a year after construction for a typical flow. It is based on the design as it stands which will be subject to further design development.

EXISTING



WITH ROCK RAMP



VIEWPOINT LOCATION

EXISTING PLAN VIEW



VIEWPOINT LOCATION

WITH ROCK RAMP PLAN VIEW

NOTE
The visualisation is an indicative image of what the rock ramp is expected to look like approximately a year after construction for a typical flow. It is based on the design as it stands which will be subject to further design development.